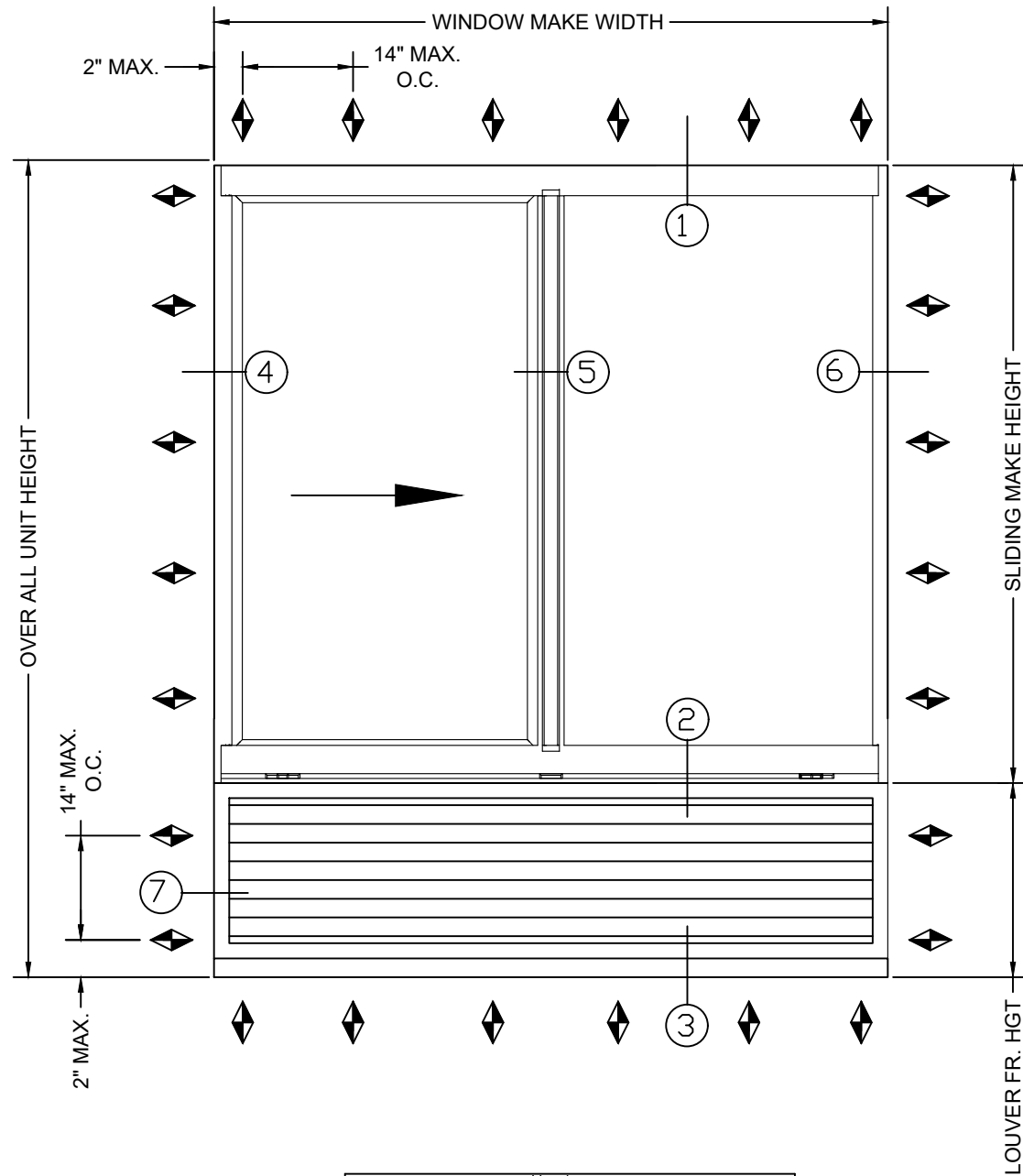


NOTE: TYPICAL M700 HORIZONTAL SLIDING IMPACT WINDOW - NAIL FIN INSTALLATION



	Maximum		Pressure
	WIDTH	HEIGHT	
OVERALL UNIT	72 "	88 3/4"	± 50 PSF
WINDOW FRAME	72 "	66 "	
LOUVER FRAME	72 "	20 3/4"	
OPERABLE SASH	35 3/4"	61 3/8"	
DAYLIGHT OPENING	32 3/8"	58 3/4"	

NOTES:

1. Installations depicted satisfy the requirements of the Florida Building Code, Building 8th/ Edition (2023) for design wind pressures and overall sizes noted.
2. Wood bucks, wood framing and steel stud framing are by others and shall be designed by the architect or engineer of record to resist the loads imparted to them.
3. Wood bucks and wood framing are assumed SYP (G=0.55) or denser. Buck width shall be greater than the window frame width. Tapered or partial width buck strips are not allowed.
4. Metal stud frames are assumed to be a minimum 18 gauge 33 KSI steel.
5. Wood screws shall meet requirements of ANSI/ASME B18.6.1.
6. TEKS screws shall be ASTM A510 Grade 1018 or equivalent.
7. Maximum shim thickness 1/4".
8. Products are not impact resistant and require approved protection devices if used in windborne debris regions.
9. Not for use in High Velocity Hurricane Zone (HVHZ).

7/8" Insulating Glass
 EXT - 3/16" Annealed Glass
 INT _Two lights 1/8" Annealed Glass with 0.090 PVB

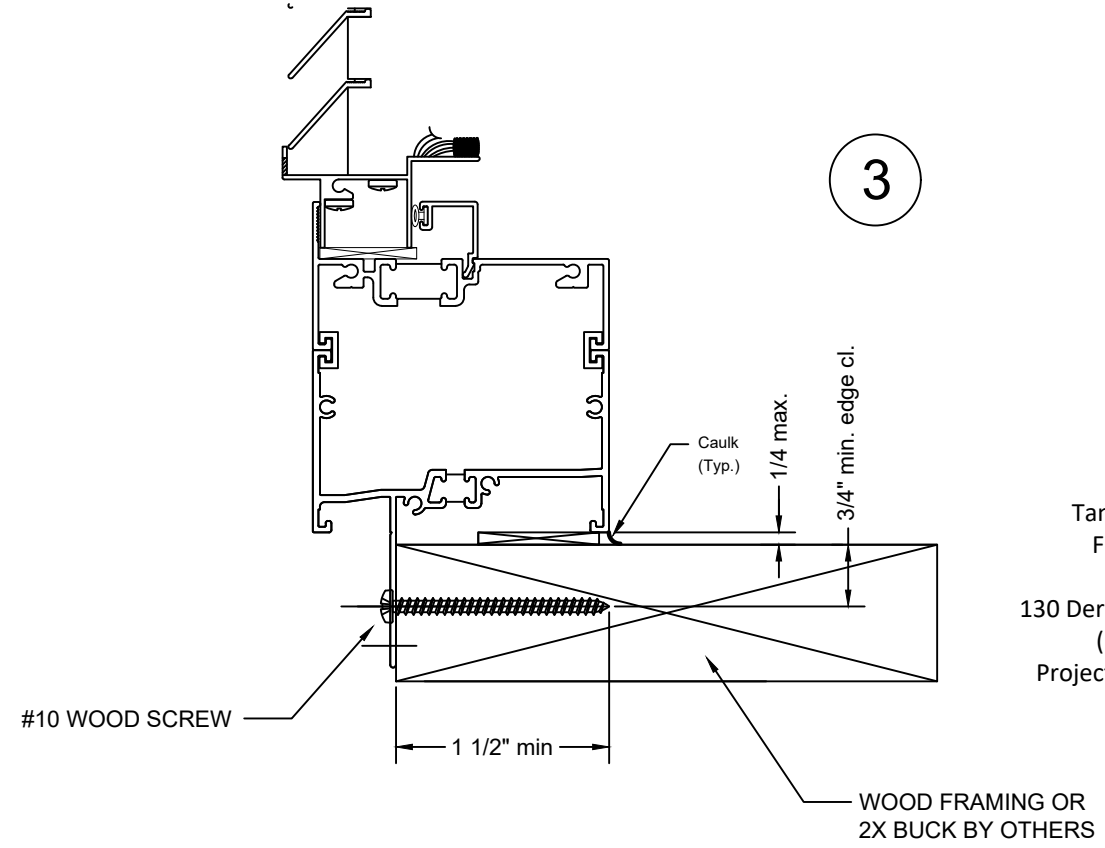
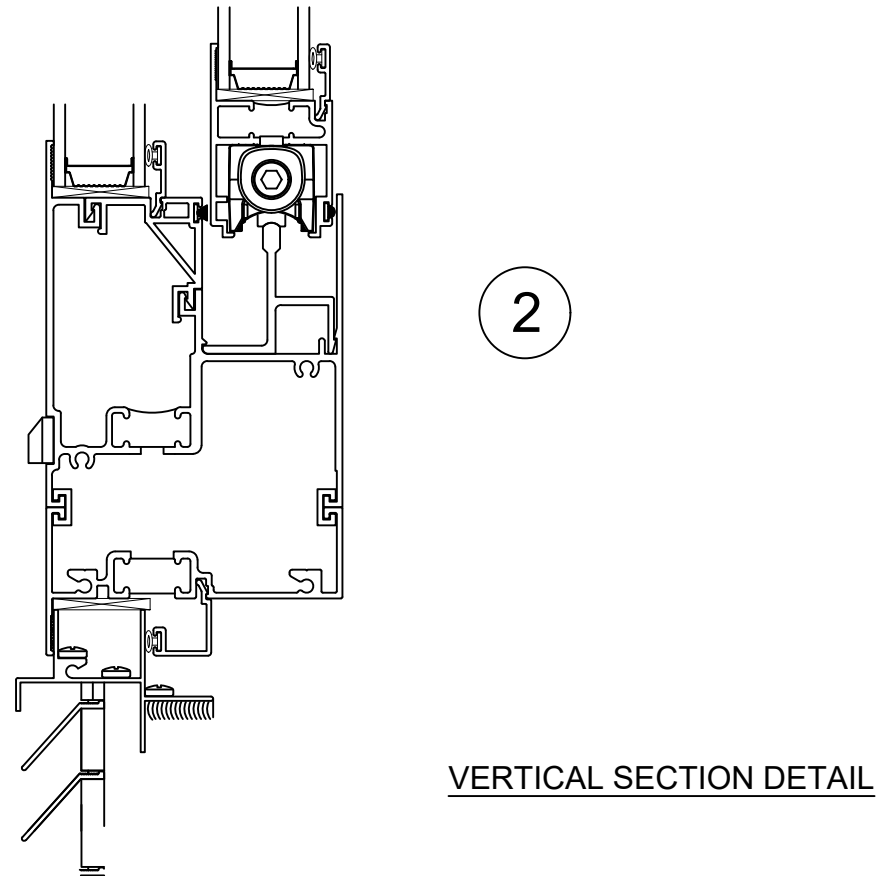
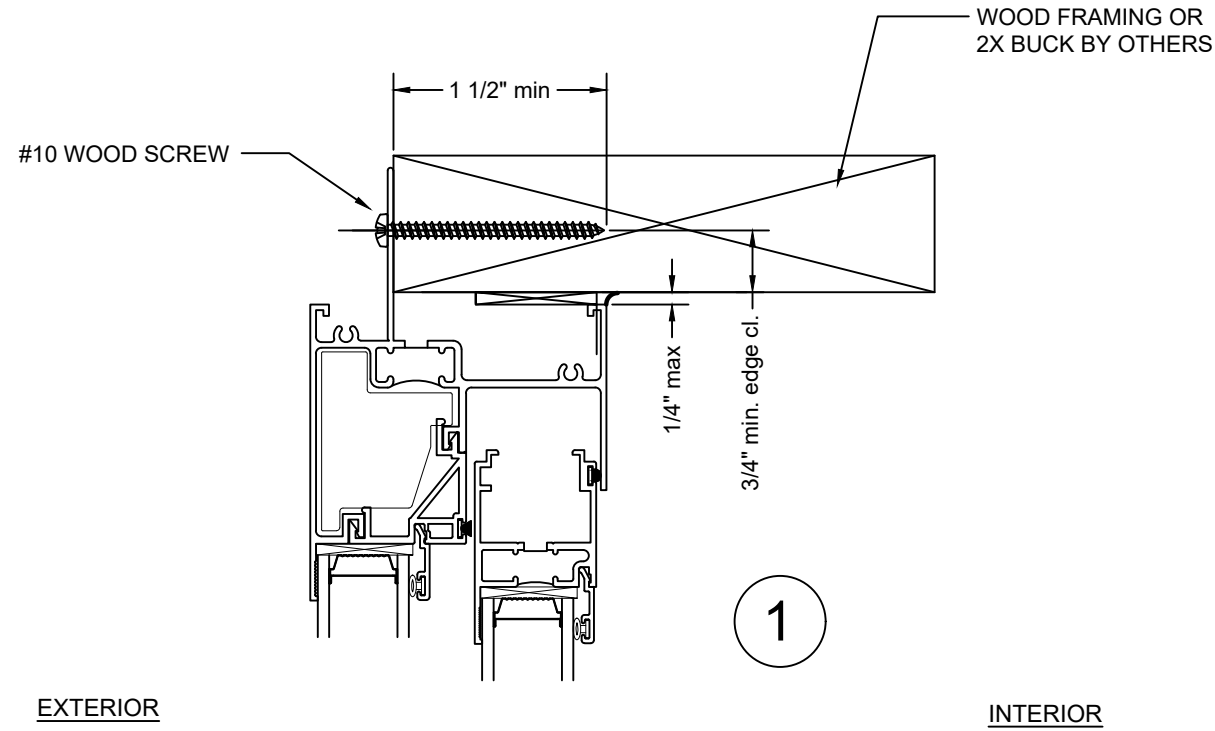
Tanya A. Dolby, P.E.
 FL PE No. 93536
 Intertek-ATI
 130 Derry Ct., York, PA 17406
 (717) 764-7700
 Project #Q8188.01-122-34

Project Name: **E700 HSW W/LOUVER**
FL# 14071
INSTALLATION INSTRUCTIONS

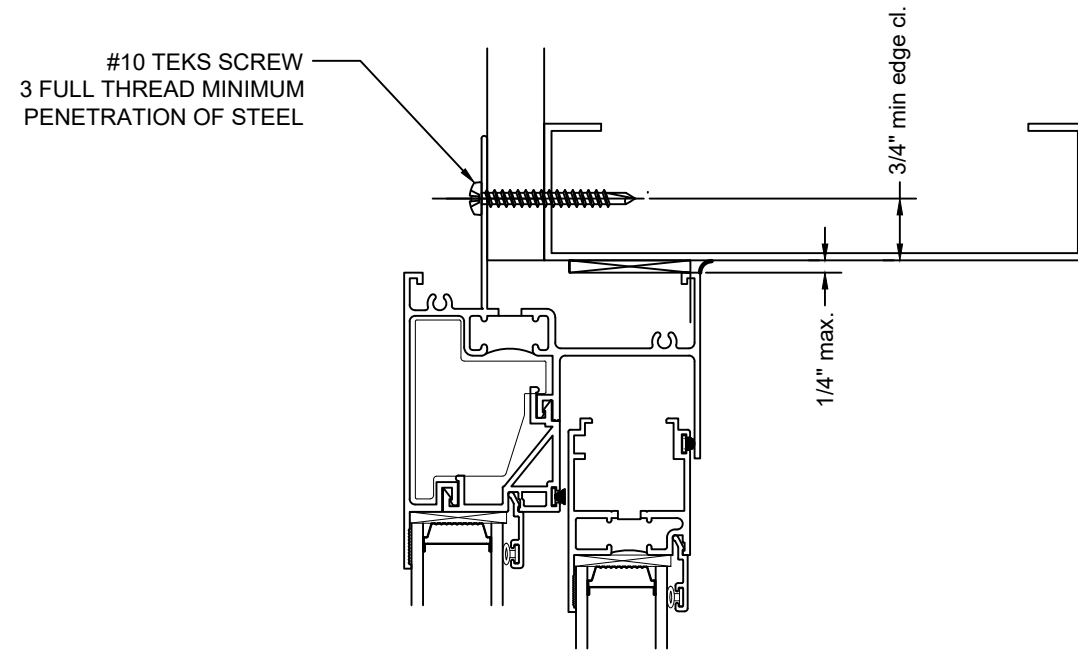
GENERAL NOTES
 QUAKER WINDOW PRODUCTS WILL NOT BE RESPONSIBLE FOR FIELD MEASUREMENT QUANTITIES, & INSTALLATION DESIGN. CONTRACTOR MUST VERIFY ALL DIMENSIONS.

PHONE (573)-744-5211
 FAX (573)-744-5586
 COMMERCIAL
 www.quakerwindows.com
 Scale: NONE
 Sheet #: 1 of 3
 504 Highway 63 South
 Freeburg, MO 65035
 draiting@quakerwindows.com
 Drawn By: BUD
 Date:

NOTE: TYPICAL M700 HORIZONTAL SLIDING IMPACT WINDOW - NAIL FIN INSTALLATION



Tanya A. Dolby, P.E.
 FL PE No. 93536
 Intertek-ATI
 130 Derry Ct., York, PA 17406
 (717) 764-7700
 Project #Q8188.01-122-34



OPTIONAL STEEL FRAMING DETAIL

Project Name: **E700 HSW W/LOUVER**
FL# 14071
INSTALLATION INSTRUCTIONS

GENERAL NOTES

QUAKER WINDOW PRODUCTS WILL NOT BE RESPONSIBLE FOR FIELD MEASUREMENT QUANTITIES, & INSTALLATION DESIGN. CONTRACTOR MUST VERIFY ALL DIMENSIONS.

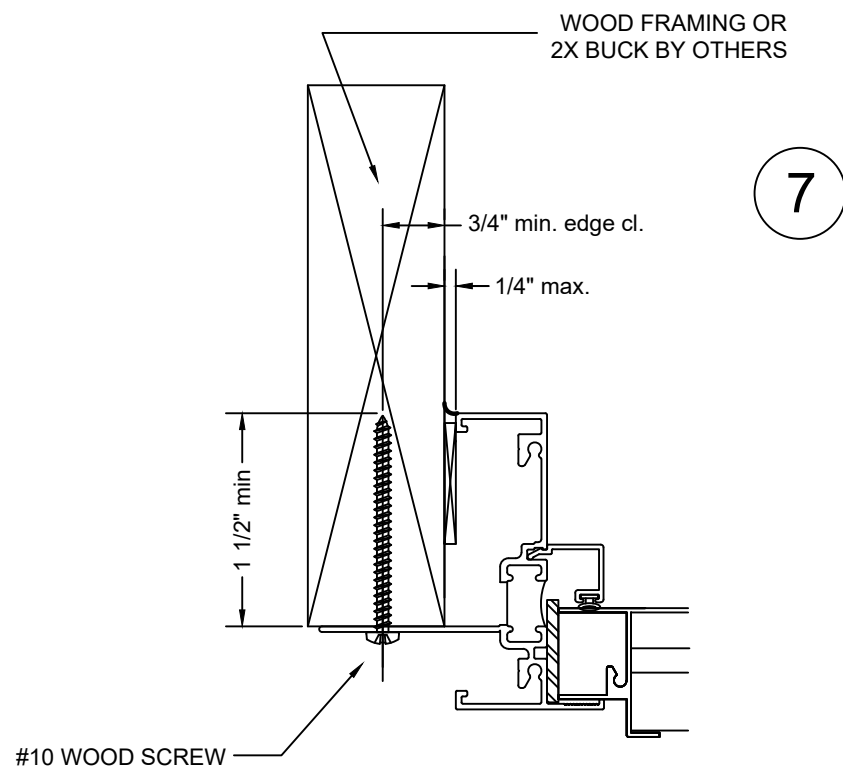
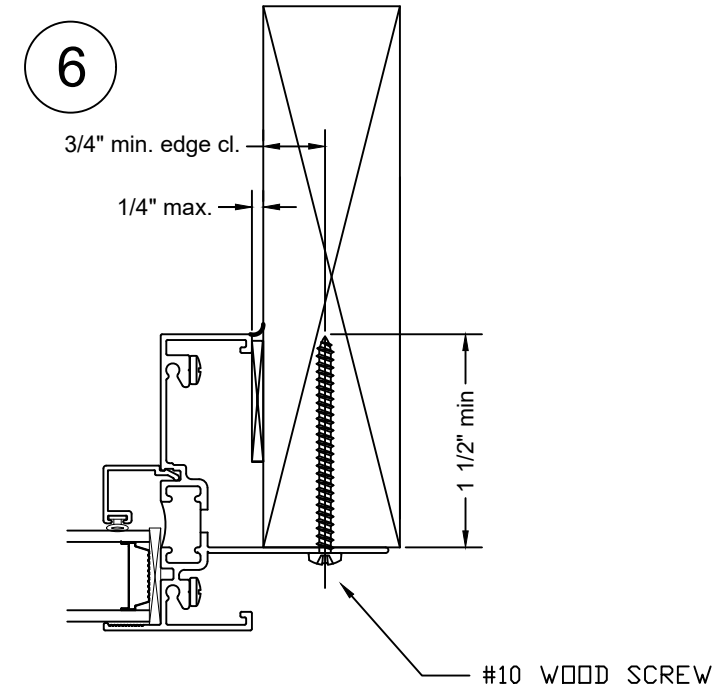
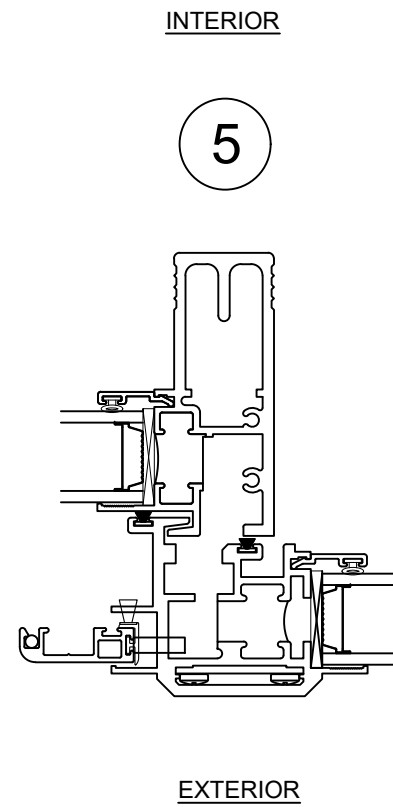
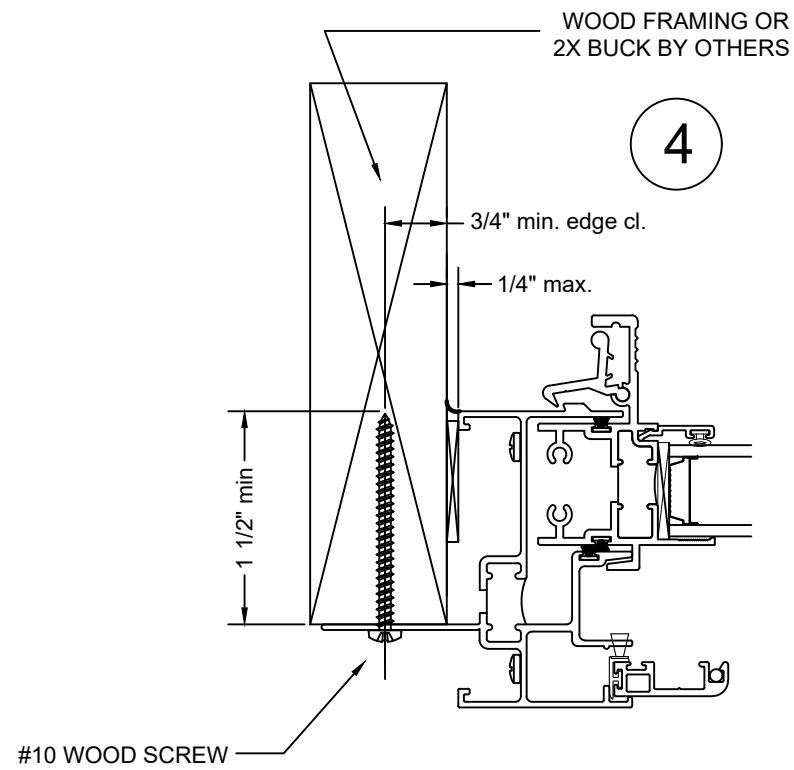
PHONE (573)-744-5211
 FAX (573)-744-5586
 COMMERCIAL
 www.quakerwindows.com

504 Highway 63 South
 Freeburg, MO 65035
 draiting@quakerwindows.com

Scale: NONE
 Sheet #: 2 of 3

Drawn By: BUD
 Date: 12-4-2023

NOTE: TYPICAL M700 HORIZONTAL SLIDING IMPACT WINDOW - NAIL FIN INSTALLATION



HORIZONTAL SECTION DETAIL WOOD FRAMING INSTALLATION

Tanya A. Dolby, P.E.
FL PE No. 93536
Intertek-ATI
130 Derry Ct., York, PA 17406
(717) 764-7700
Project #Q8188.01-122-34

GENERAL NOTES QUAKER WINDOW PRODUCTS WILL NOT BE RESPONSIBLE FOR FIELD MEASUREMENT QUANTITIES, & INSTALLATION DESIGN. CONTRACTOR MUST VERIFY ALL DIMENSIONS.	
PHONE (573)-744-5211 FAX (573)-744-5586 COMMERCIAL www.quakerwindows.com	Scale: NONE Sheet #: 3 of 3
504 Highway 63 South Freeburg, MO 65035 dtrating@quakerwindows.com	Drawn By: BUD Date:
Project Name: E700 HSW W/LOUVER FL# 14071 INSTALLATION INSTRUCTIONS	

